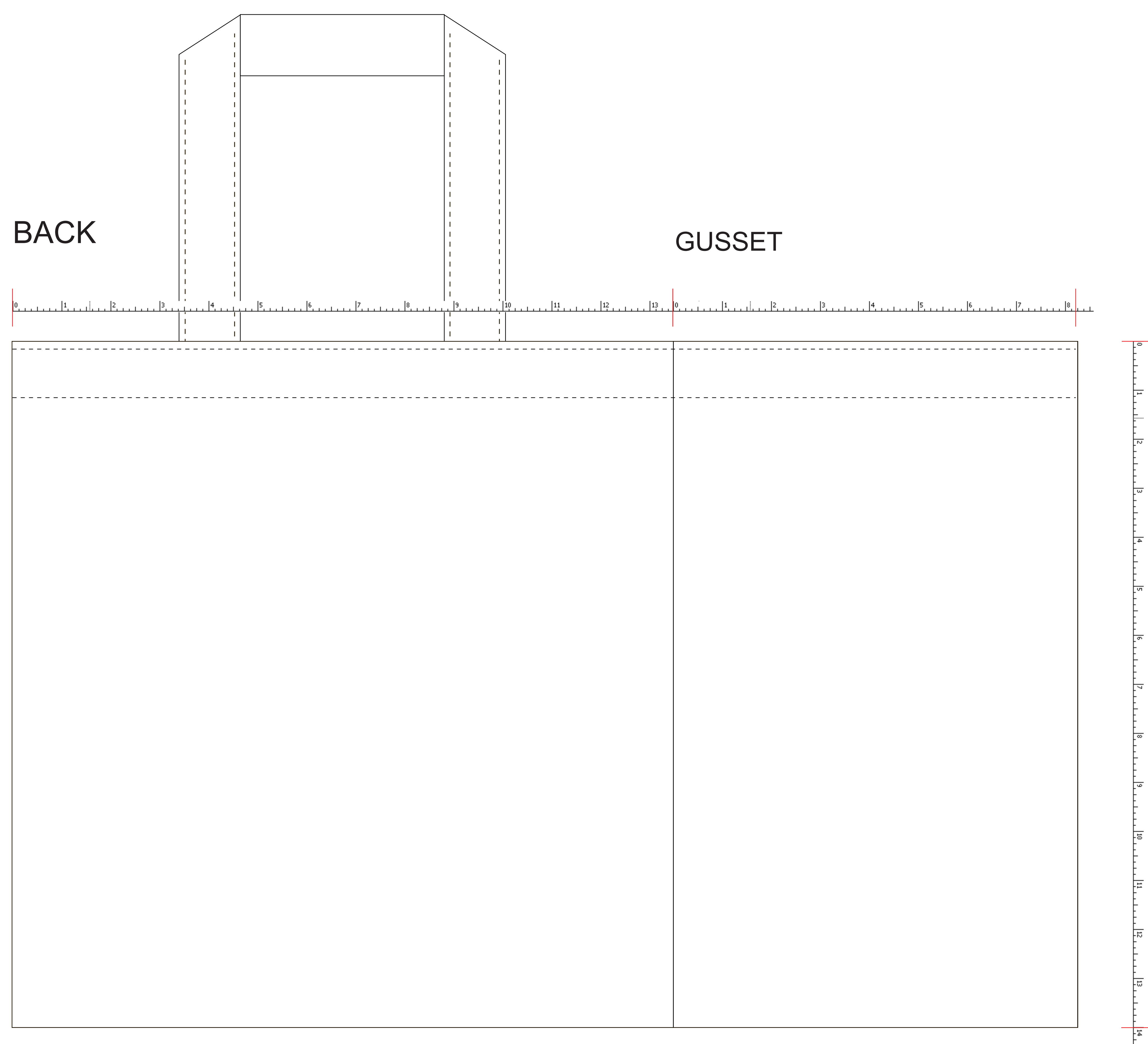
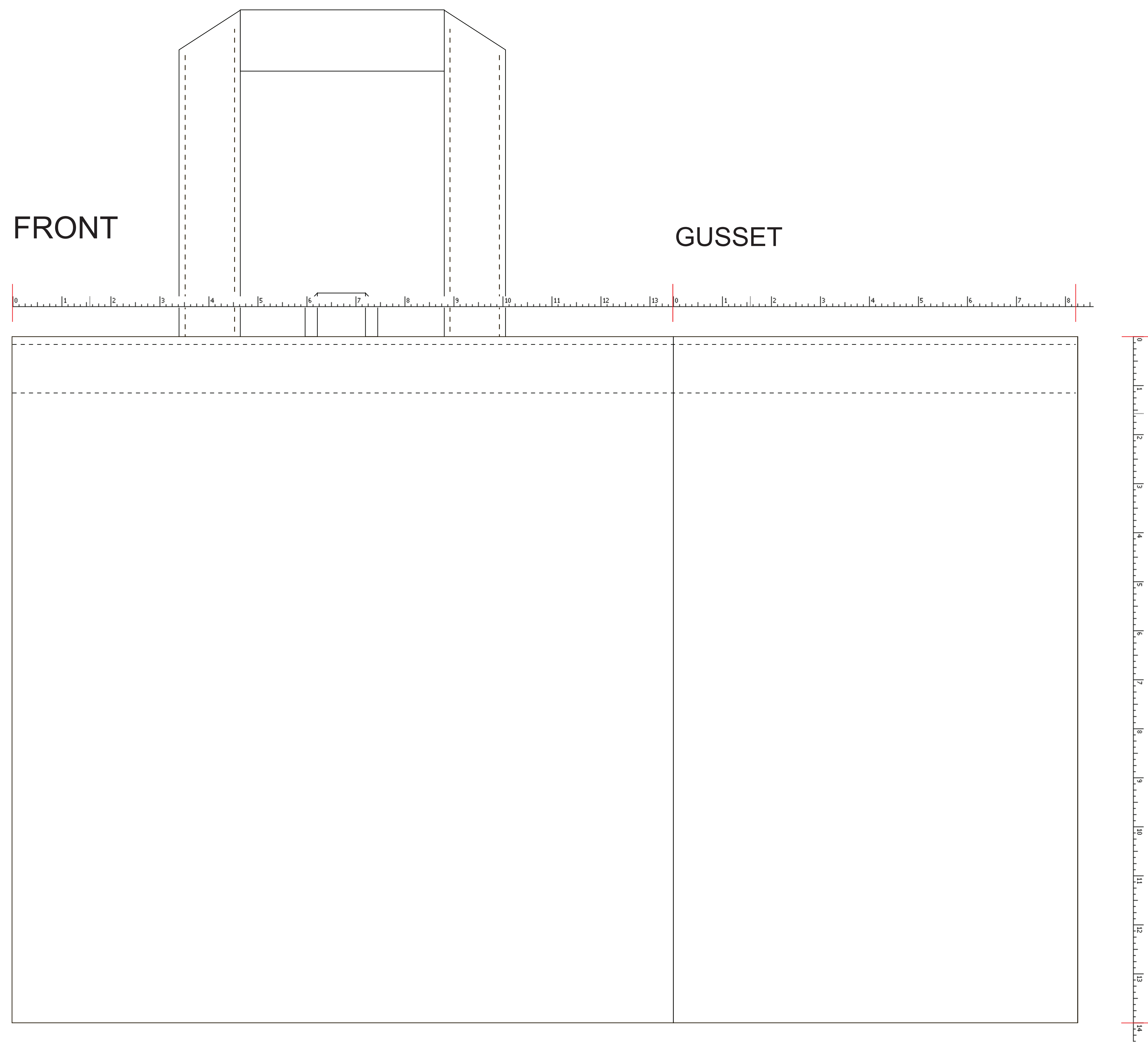


**WARNING! DO NOT PRINT RED DOTTED FOLD LINE IN PRODUCTION**



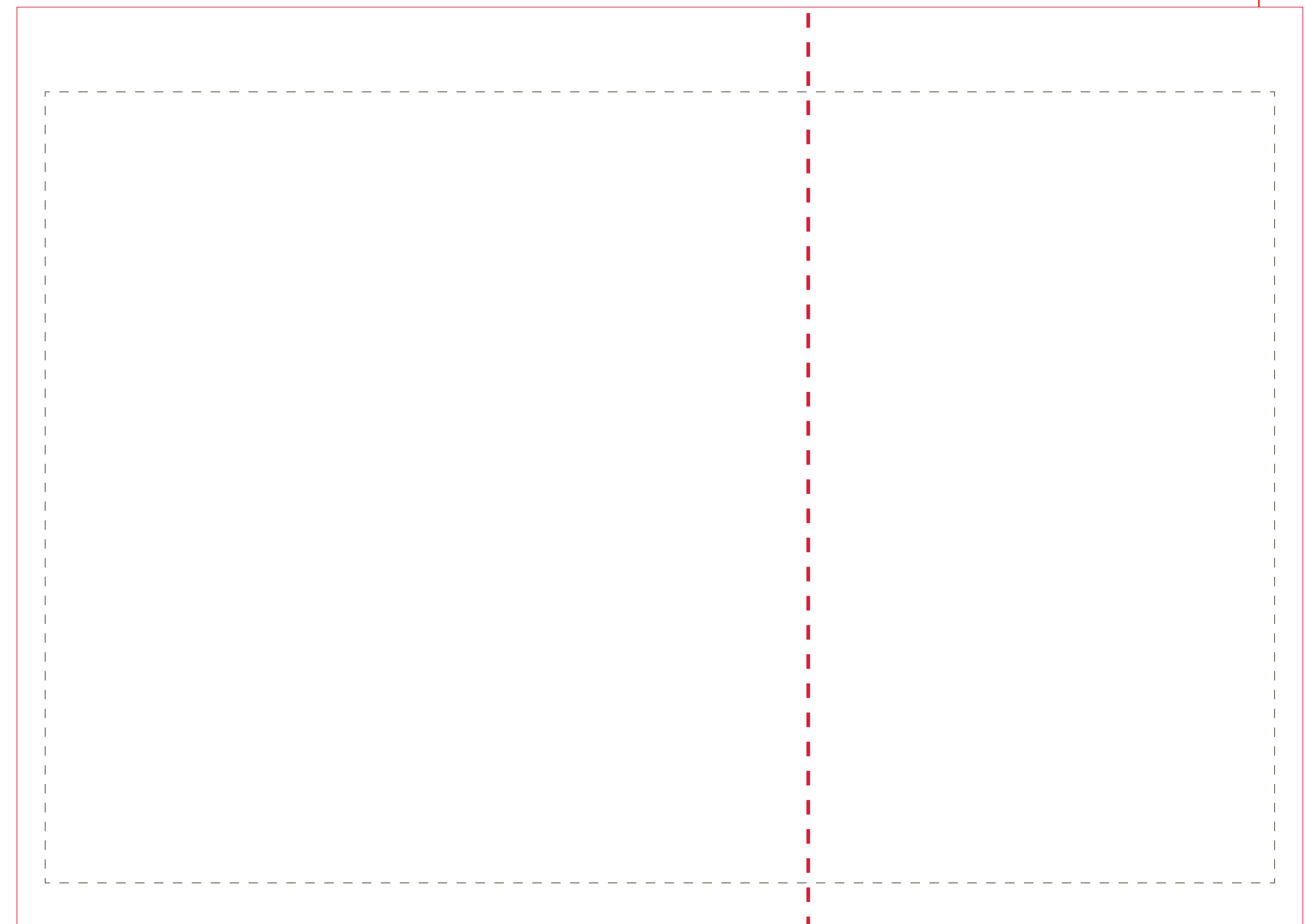
SEAM ALLOWANCE  
Top hem: 1.75"  
Bottom hem: 0.75"  
Side hems: 0.5" each

FRONT + GUSSET 1

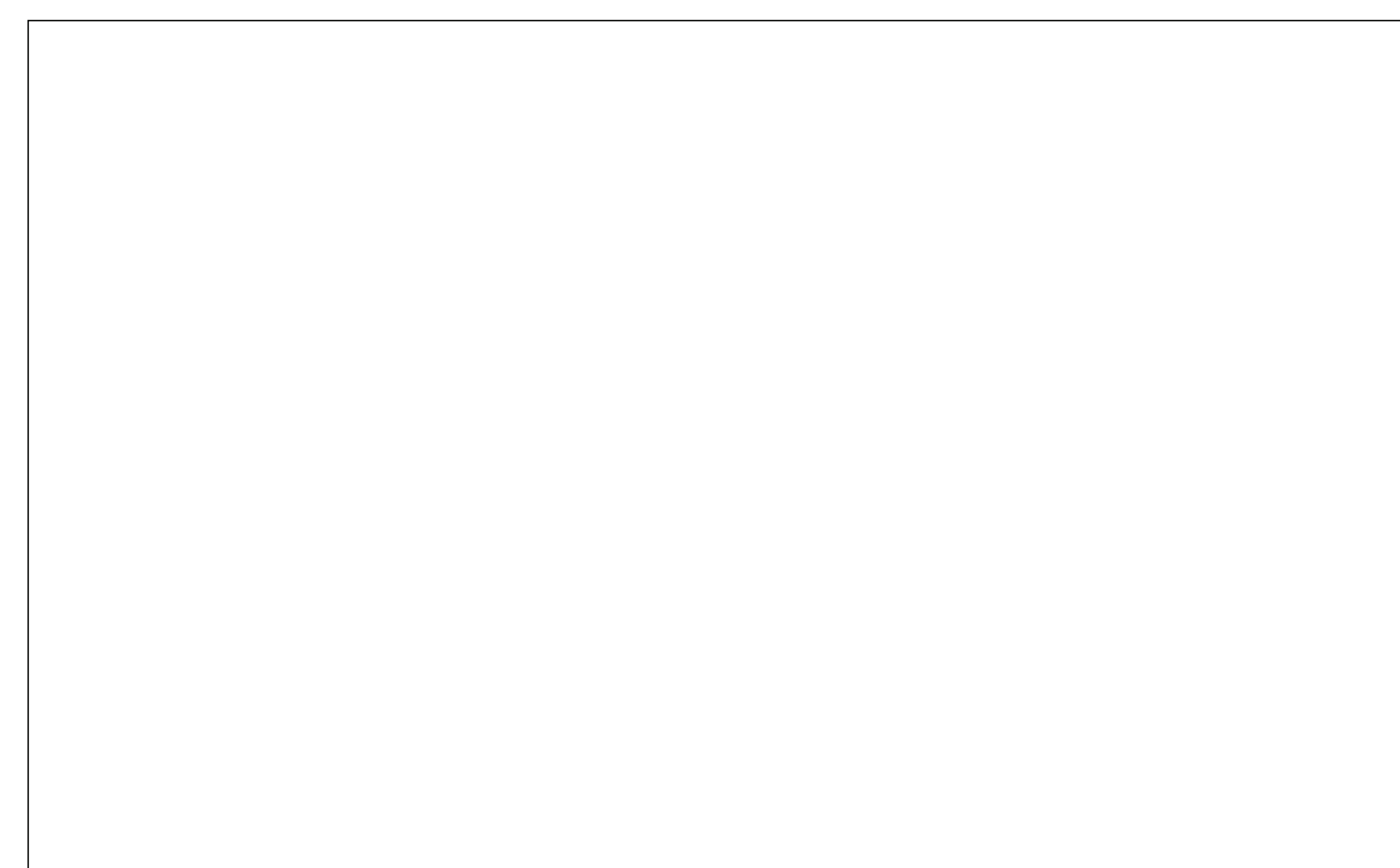


SEAM ALLOWANCE  
Top hem: 1.75"  
Bottom hem: 0.75"  
Side hems: 0.5" each

BACK + GUSSET 2



BOTTOM



<b>MOCKUP PROOF</b>	Project Description:	EW785
	Dimensions:	13.5" w x 14" h x 8.25" d
	Strap Length:	10" from top of bag, width: 1.25"
	Bag Material:	Woven PP 110gsm
	Strap Material:	NWPP
	Finish:	Matte
Separator Information:		
Application/Version:	Illustrator	
Build File Size (% Actual Size):	100%	
Layers/Pages:	16/16	
Final Art Size:		
Format:		
Overall:		
Fonts:	ALL FONTS OUTLINED	
Images:	ALL	
Bag Color:	XXXX	
Designer and Date Made:	Approved for Release by:	

Assigned Color Swatches (Spot Colors):  
**CMYK**

Additional Notes:  
Loop material - NWPP  
Gusset material - Woven PP  
Two corner side seams only  
Two folded side seams.  
front + side are one piece  
back + side are one piece  
DO NOT PRINT RED DOTTED LINE ON BAGS  
Only one loop on bag